



# Diamond Head Geological Map

1:5,000

(based on 9434-1S Laurieton Sheet)

152° 46' 42" E  
31° 47' 02" S 91

152° 48' 36" E  
31° 47' 02" S

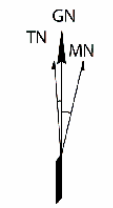
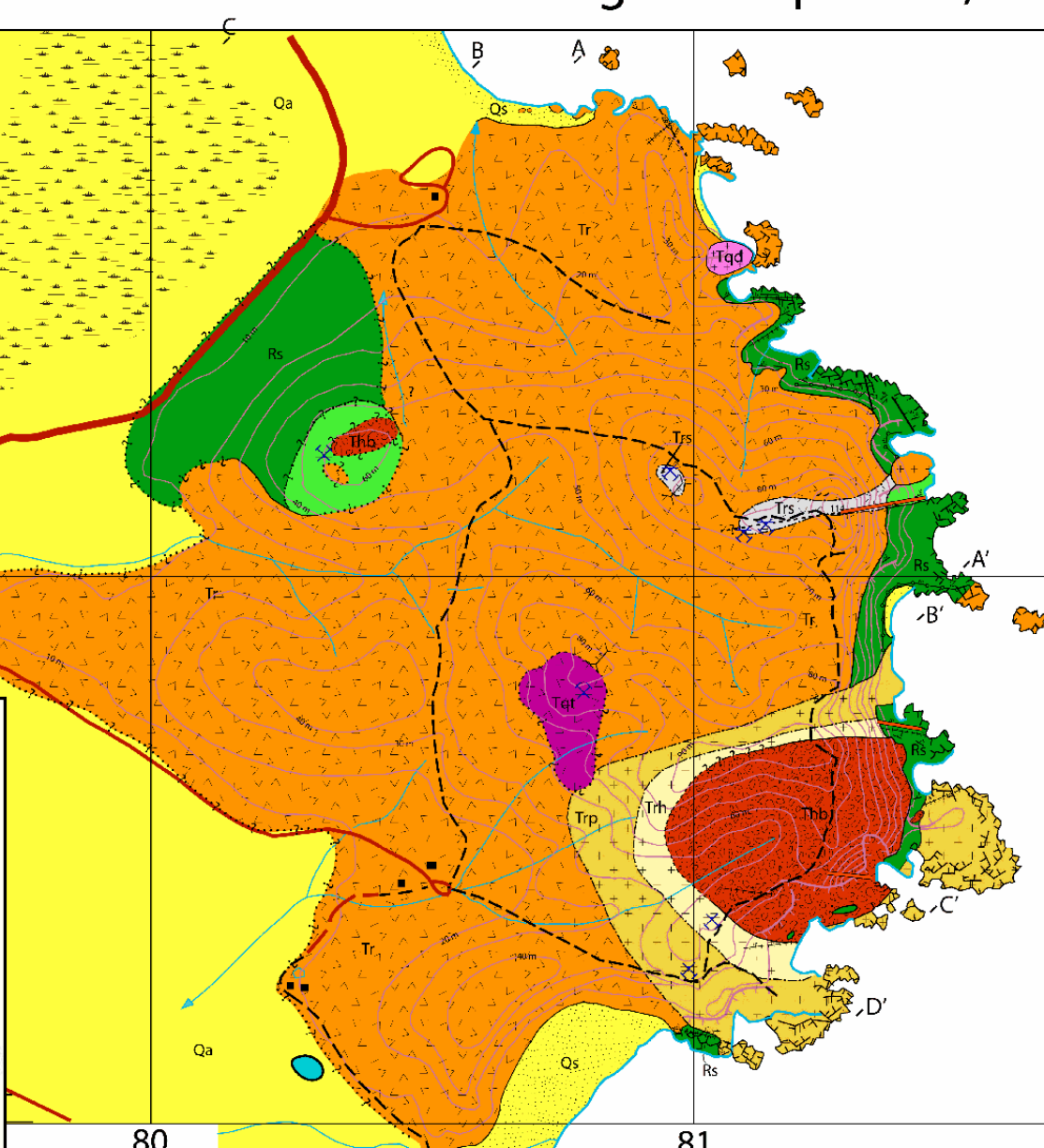
90

80

81

152° 48' 36" E  
31° 45' 57" S

Qs	Beach sand
Qa	Sand, silt, mud
Tqd+	Quartz diorite
Tqt	Massive quartz-tourmaline rock
Thb	Breccia
Trp	Rhyolite (sericite quartz pyrite alteration)
Trh	Rhyolite (intense sericite quartz alteration)
Tr	Rhyolite (silicic alteration) (Trs) Rhyolite (intrusive)
Rs	Sandstone, mudstone, sandy mudstone metasandstone, metamudstone



Grid magnetic angle  
12.42 degrees correct  
for 1999.  
Magnetic north moves  
westerly by less than  
0.01 degree per  
annum

Scale 1:5000

